



# Huffman Building Q

**12150 Industry Way, Anchorage, AK**  
**Unit 2 - 2,624 sf to 5,741 sf**  
**2 floors office with warehouse**

- One dock-high door
- Huffman Business Park
- Professionally managed industrial complex
- Easy access to New and Old Seward Highways
- \$1.00/sf, NNN

## Contact

[DenaliCommercial.com](http://DenaliCommercial.com)

**Cyelia A. Gumennik**

907-564-2496

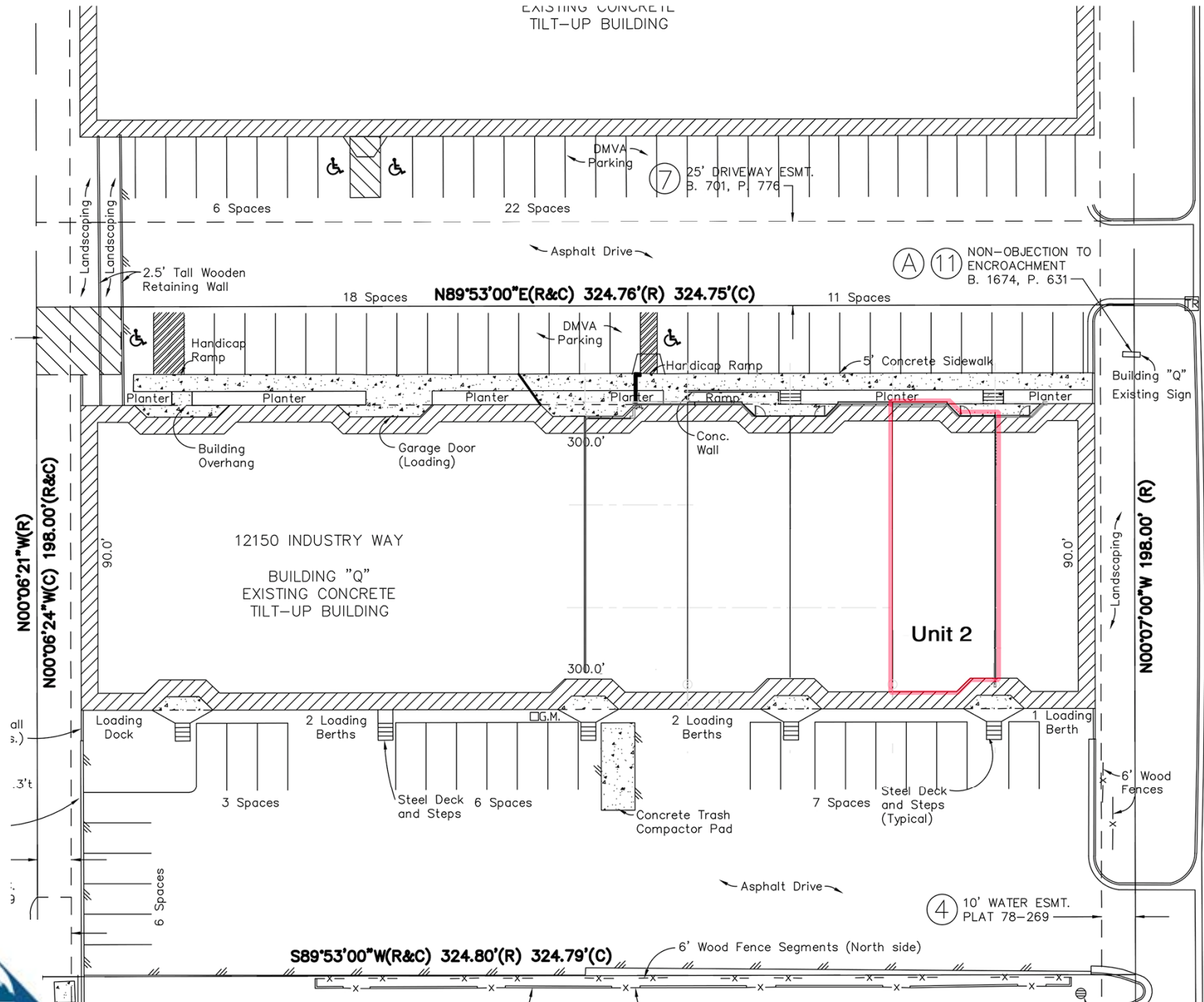
**Robert Martin**

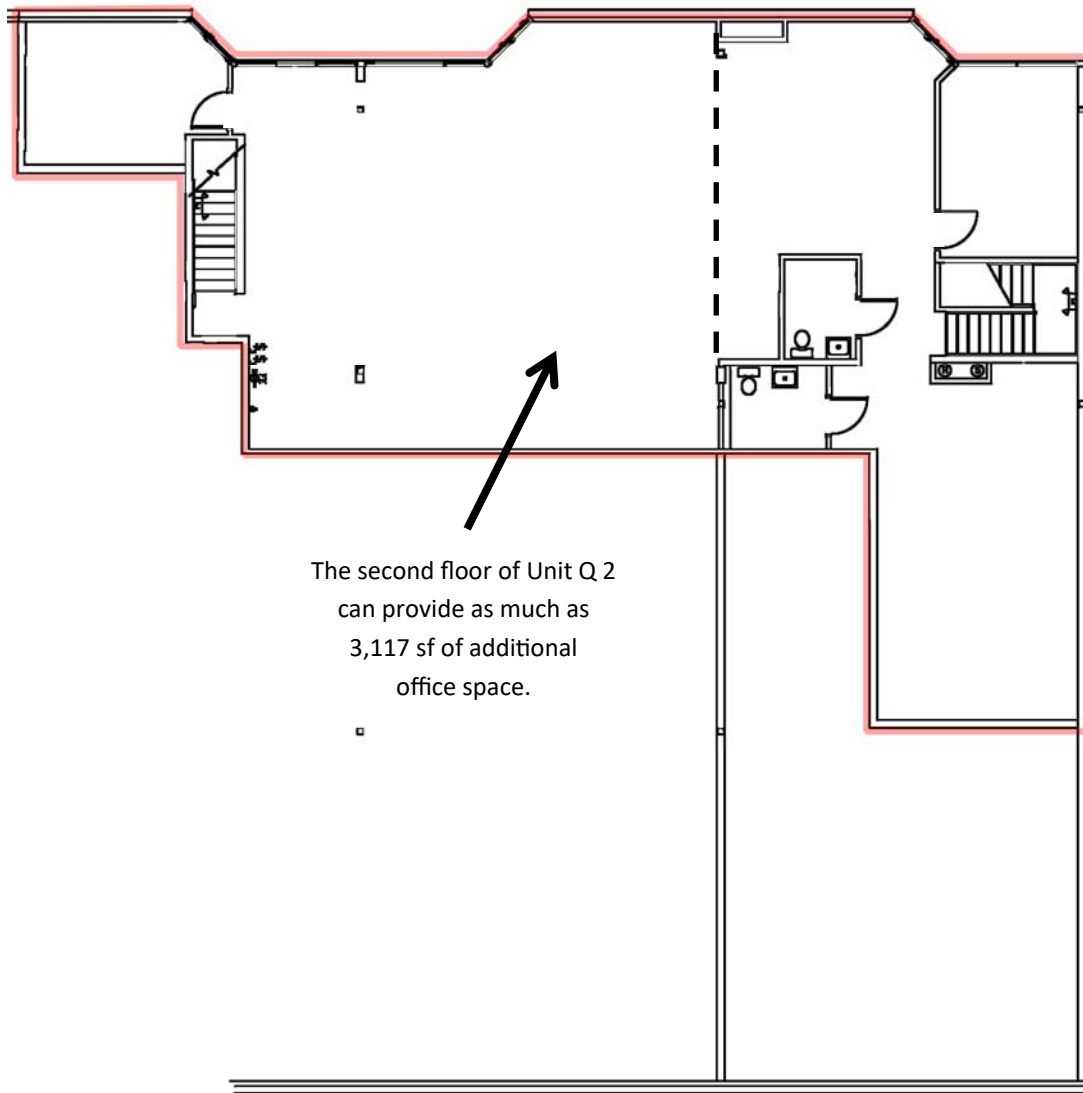
907-564-2406

NO WARRANTY OR REPRESENTATION, EXPRESS OR IMPLIED, IS MADE AS TO THE ACCURACY OF THE INFORMATION CONTAINED HEREIN, AND THE SAME IS SUBMITTED SUBJECT TO ERRORS, OMISSIONS, CHANGE OF PRICE, RENTAL OR OTHER CONDITIONS, PRIOR SALE, LEASE OR FINANCING, OR WITHDRAWAL WITHOUT NOTICE, AND OF ANY SPECIAL LISTING CONDITIONS IMPOSED BY OUR PRINCIPALS NO WARRANTIES OR REPRESENTATIONS ARE MADE AS TO THE CONDITION OF THE PROPERTY OR ANY HAZARDS CONTAINED THEREIN ARE ANY TO BE IMPLIED.



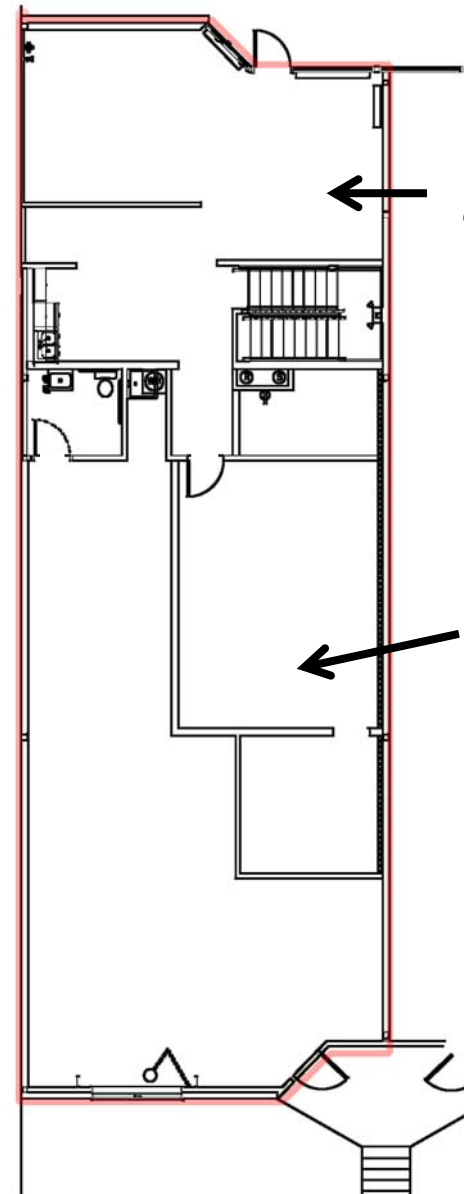
EXISTING CONCRETE  
TILT-UP BUILDING





The second floor of Unit Q 2 can provide as much as 3,117 sf of additional office space.

Unit Q 2 **second floor**  
Office = 3,117 sf



Q 2 first floor office = 1,024 sf

Existing conference room can be demolished to create a total of 1,600 sf warehouse

Unit Q 2 **first floor**  
Warehouse & office = 2,624 sf

