

Carr Gottstein Building

310 K Street, Anchorage, AK
Suite sizes from 1,113 to 8,384 rsf
Lease rates starting at \$2.55/rsf

- Located in downtown Anchorage, adjacent to Courthouse
- Stunning views of Cook Inlet, Chugach Mountains and the City
- Class A office with garage parking available, exercise center & more
- Close to restaurants, athletic clubs, Coastal Trail and additional parking
- Fully serviced

Contact

DenaliCommercial.com

Robert Martin

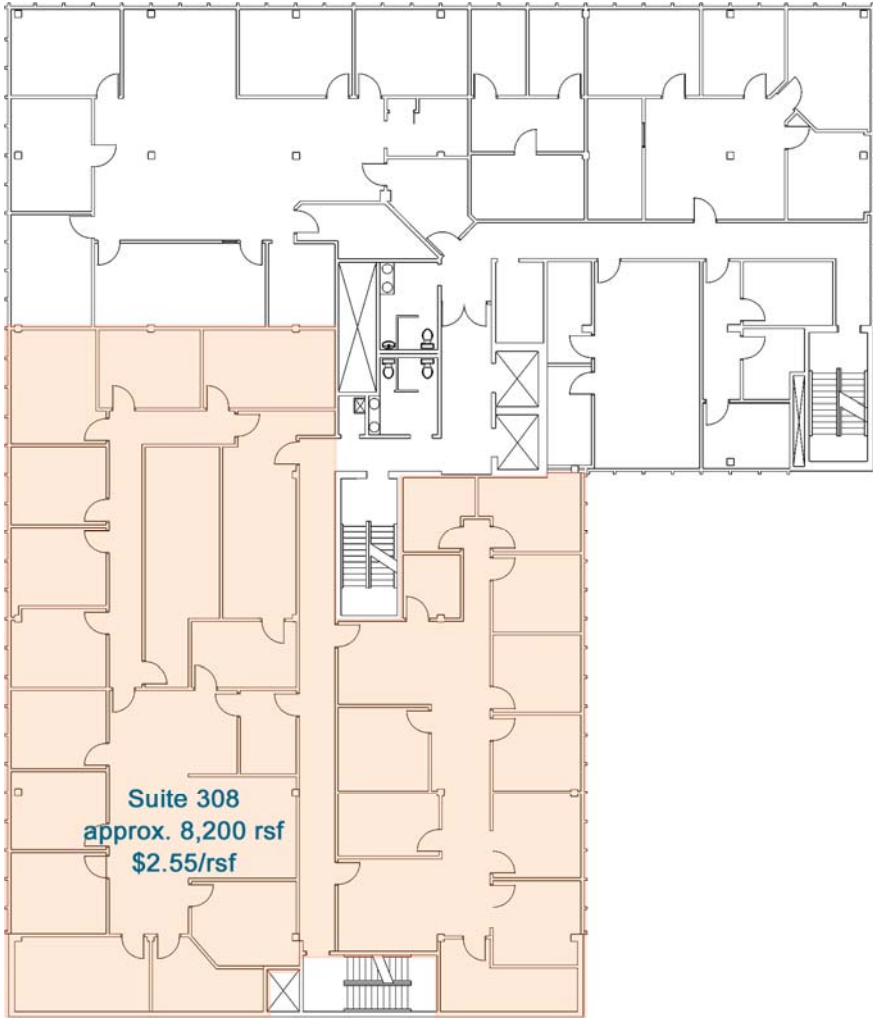
907-564-2406

Cyelia A. Gumennik

907-564-2496

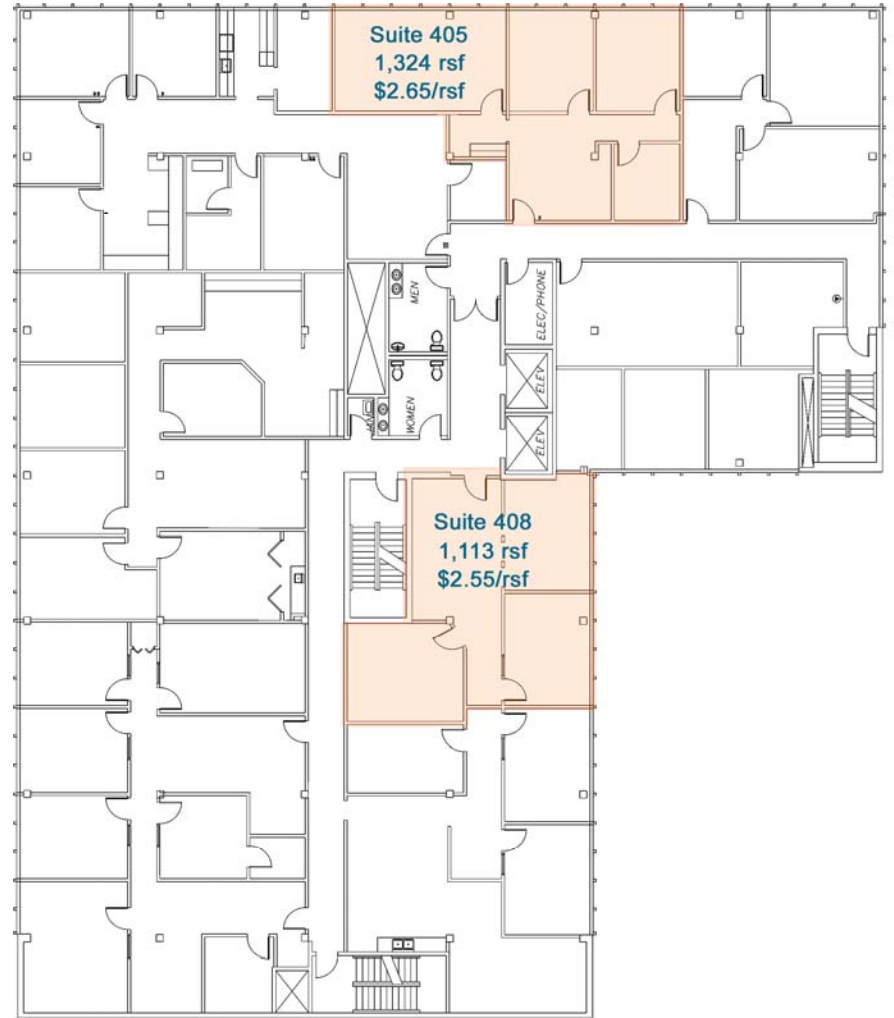
NO WARRANTY OR REPRESENTATION, EXPRESS OR IMPLIED, IS MADE AS TO THE ACCURACY OF THE INFORMATION CONTAINED HEREIN, AND THE SAME IS SUBMITTED SUBJECT TO ERRORS, OMISSIONS, CHANGE OF PRICE, RENTAL OR OTHER CONDITIONS, PRIOR SALE, LEASE OR FINANCING, OR WITHDRAWAL WITHOUT NOTICE, AND OF ANY SPECIAL LISTING CONDITIONS IMPOSED BY OUR PRINCIPALS NO WARRANTIES OR REPRESENTATIONS ARE MADE AS TO THE CONDITION OF THE PROPERTY OR ANY HAZARDS CONTAINED THEREIN ARE ANY TO BE IMPLIED.





Suite 308
approx. 8,200 rsf
\$2.55/rsf

310 K Street
3rd floor

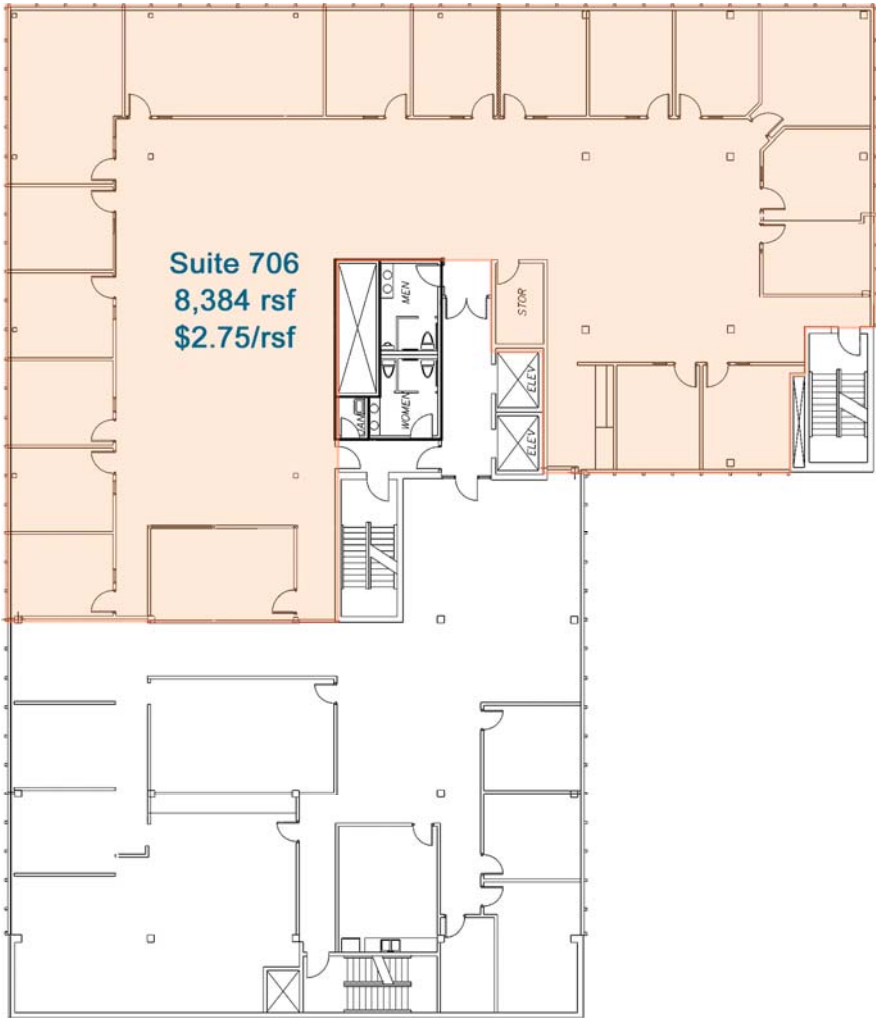


Suite 405
1,324 rsf
\$2.65/rsf

Suite 408
1,113 rsf
\$2.55/rsf

310 K Street
4th floor





310 K Street

7th floor

