

Carr Gottstein Building

310 K Street, Anchorage, AK
Suite sizes from 1,113 - 3,867 rsf
Lease rates starting at \$1.70/rsf

- Located in downtown Anchorage, adjacent to Courthouses
- Stunning views of Cook Inlet, Chugach Mountains and the City
- Class A office with garage parking available, exercise center & more
- Close to restaurants, athletic clubs, Coastal Trail and additional parking
- Fully serviced

Contact

Cycelia A. Gumennik

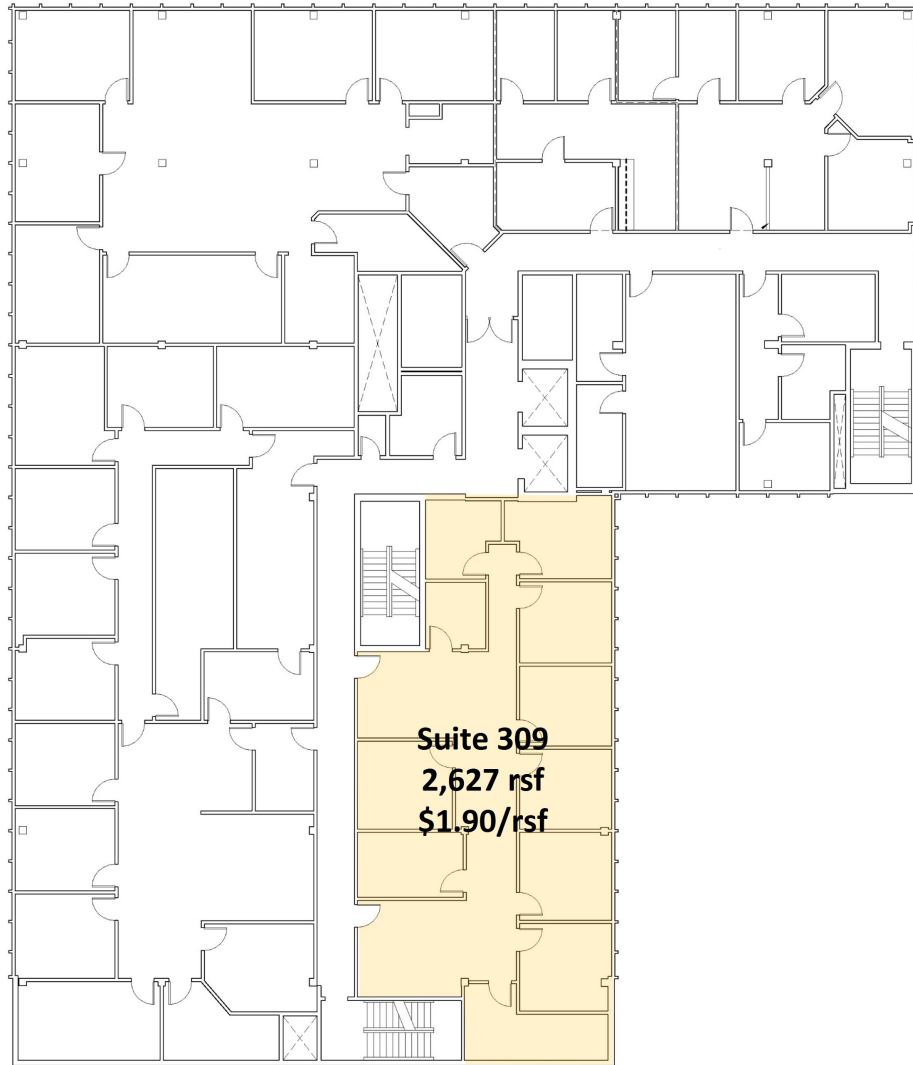
907-564-2496

Cycelia@DenaliCommercial.com

DenaliCommercial.com

NO WARRANTY OR REPRESENTATION, EXPRESS OR IMPLIED, IS MADE AS TO THE ACCURACY OF THE INFORMATION CONTAINED HEREIN, AND THE SAME IS SUBMITTED SUBJECT TO ERRORS, OMISSIONS, CHANGE OF PRICE, RENTAL OR OTHER CONDITIONS, PRIOR SALE, LEASE OR FINANCING, OR WITHDRAWAL WITHOUT NOTICE, AND OF ANY SPECIAL LISTING CONDITIONS IMPOSED BY OUR PRINCIPALS NO WARRANTIES OR REPRESENTATIONS ARE MADE AS TO THE CONDITION OF THE PROPERTY OR ANY HAZARDS CONTAINED THEREIN ARE ANY TO BE IMPLIED.

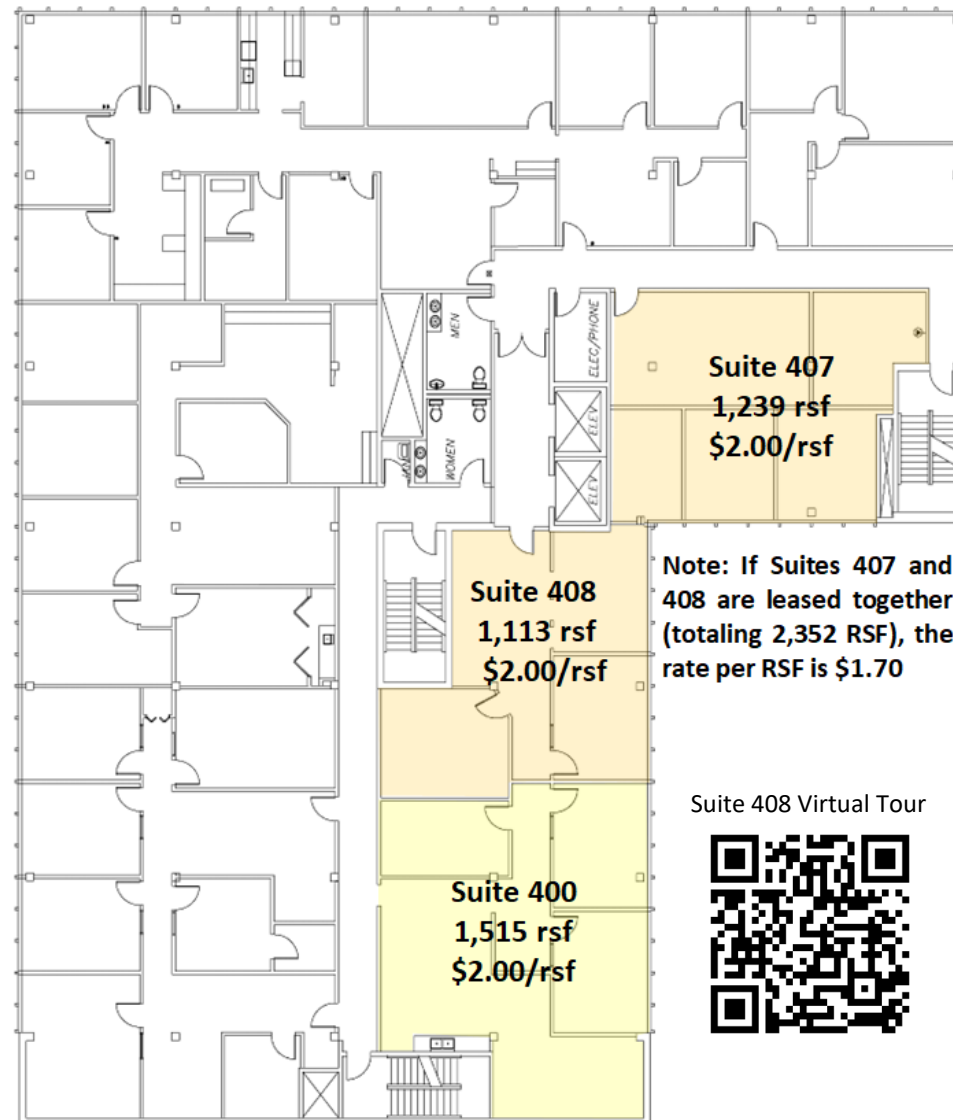




**310 K Street
3rd Floor**

**Suite 309
2,627 rsf
\$1.90/rsf**





**310 K Street
4th Floor**

Suites 400, 407 and 408 can be
combined for a max contiguous 3,867 rsf



Exercise Room for Exclusive Tenant Use



Yoga Room for Exclusive Tenant Use



4th Floor Office View

