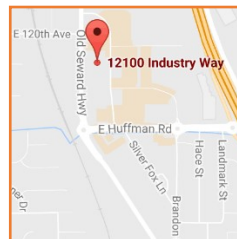
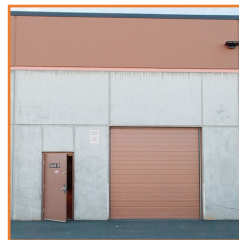




12100 Industry Way, Anchorage, AK
Unit 9 - 2,590 sf
2 Floors
Office w/ Warehouse



- One 10' (h) x 9.5' (w) overhead door
- Huffman Business Park
- Professionally managed industrial complex
- Easy access to New and Old Seward Highways
- \$1.15/sf/mo

Huffman Building P

Contact

Cycelia A. Gumennik

907-564-2496

Cycelia@DenaliCommercial.com

DenaliCommercial.com

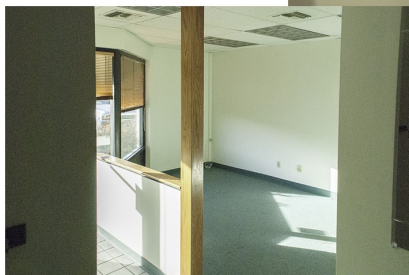
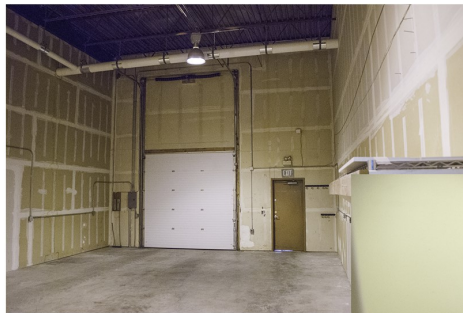
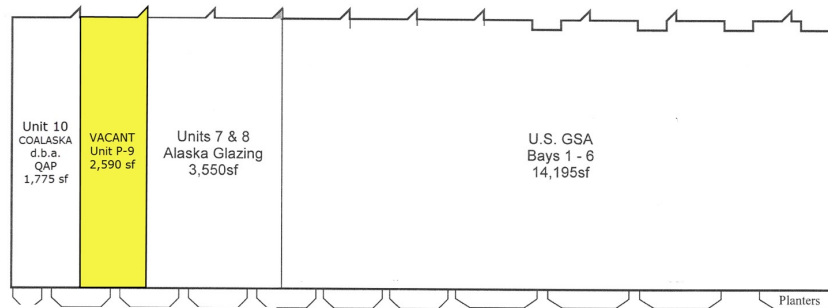
NO WARRANTY OR REPRESENTATION, EXPRESS OR IMPLIED, IS MADE AS TO THE ACCURACY OF THE INFORMATION CONTAINED HEREIN, AND THE SAME IS SUBMITTED SUBJECT TO ERRORS, OMISSIONS, CHANGE OF PRICE, RENTAL OR OTHER CONDITIONS, PRIOR SALE, LEASE OR FINANCING, OR WITHDRAWAL WITHOUT NOTICE, AND OF ANY SPECIAL LISTING CONDITIONS IMPOSED BY OUR PRINCIPALS NO WARRANTIES OR REPRESENTATIONS ARE MADE AS TO THE CONDITION OF THE PROPERTY OR ANY HAZARDS CONTAINED THEREIN ARE ANY TO BE IMPLIED.



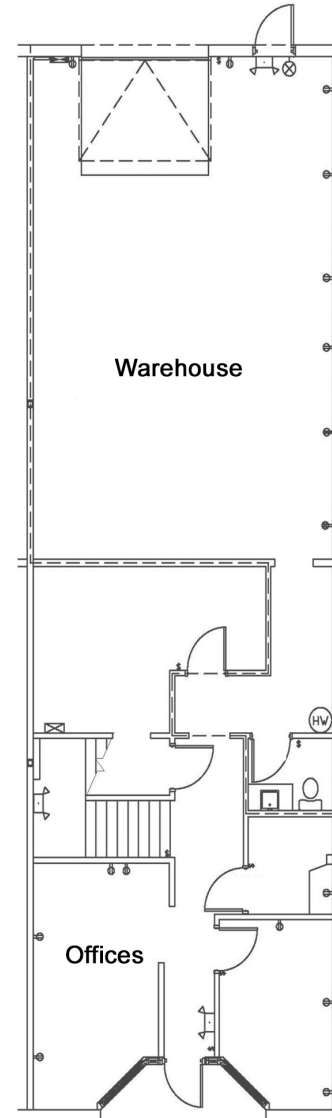
Huffman Business Park

Building P

Unit P-9 - 2,590 sf



1st floor



2nd floor

