

12150 Industry Way, Anchorage, AK
Unit 2 - 2,624sf to 5,741sf
2 floors office w/ warehouse

- One dock-high door
- Huffman Business Park
- Professionally managed industrial complex
- Easy access to New and Old Seward Highways
- \$1.10/sf/mo

Huffman Building Q

Contact

Cycelia A. Gumennik

907-564-2496

Cycelia@DenaliCommercial.com

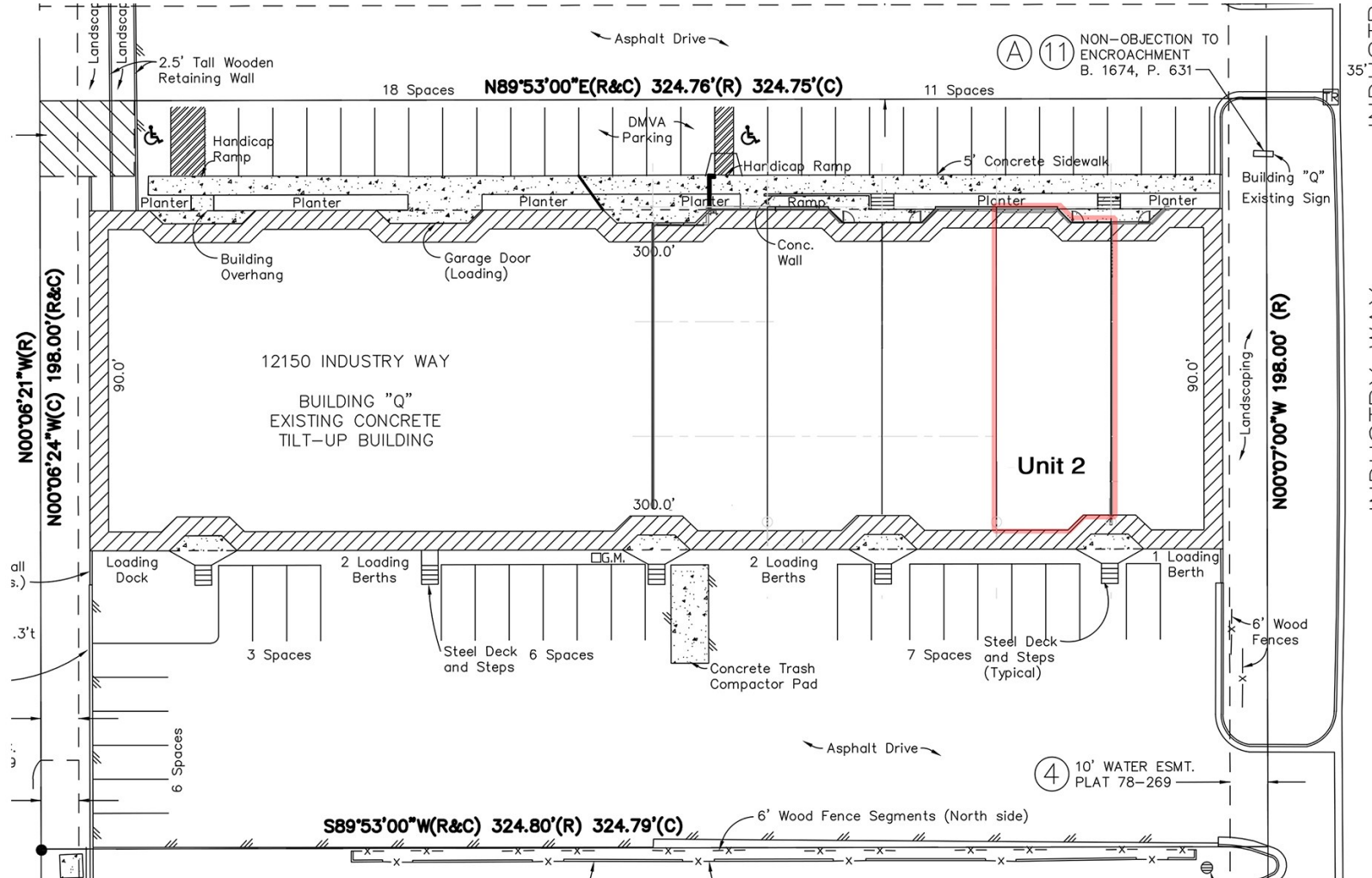
DenaliCommercial.com

NO WARRANTY OR REPRESENTATION, EXPRESS OR IMPLIED, IS MADE AS TO THE ACCURACY OF THE INFORMATION CONTAINED HEREIN, AND THE SAME IS SUBMITTED SUBJECT TO ERRORS, OMISSIONS, CHANGE OF PRICE, RENTAL OR OTHER CONDITIONS, PRIOR SALE, LEASE OR FINANCING, OR WITHDRAWAL WITHOUT NOTICE, AND OF ANY SPECIAL LISTING CONDITIONS IMPOSED BY OUR PRINCIPALS NO WARRANTIES OR REPRESENTATIONS ARE MADE AS TO THE CONDITION OF THE PROPERTY OR ANY HAZARDS CONTAINED THEREIN ARE ANY TO BE IMPLIED.

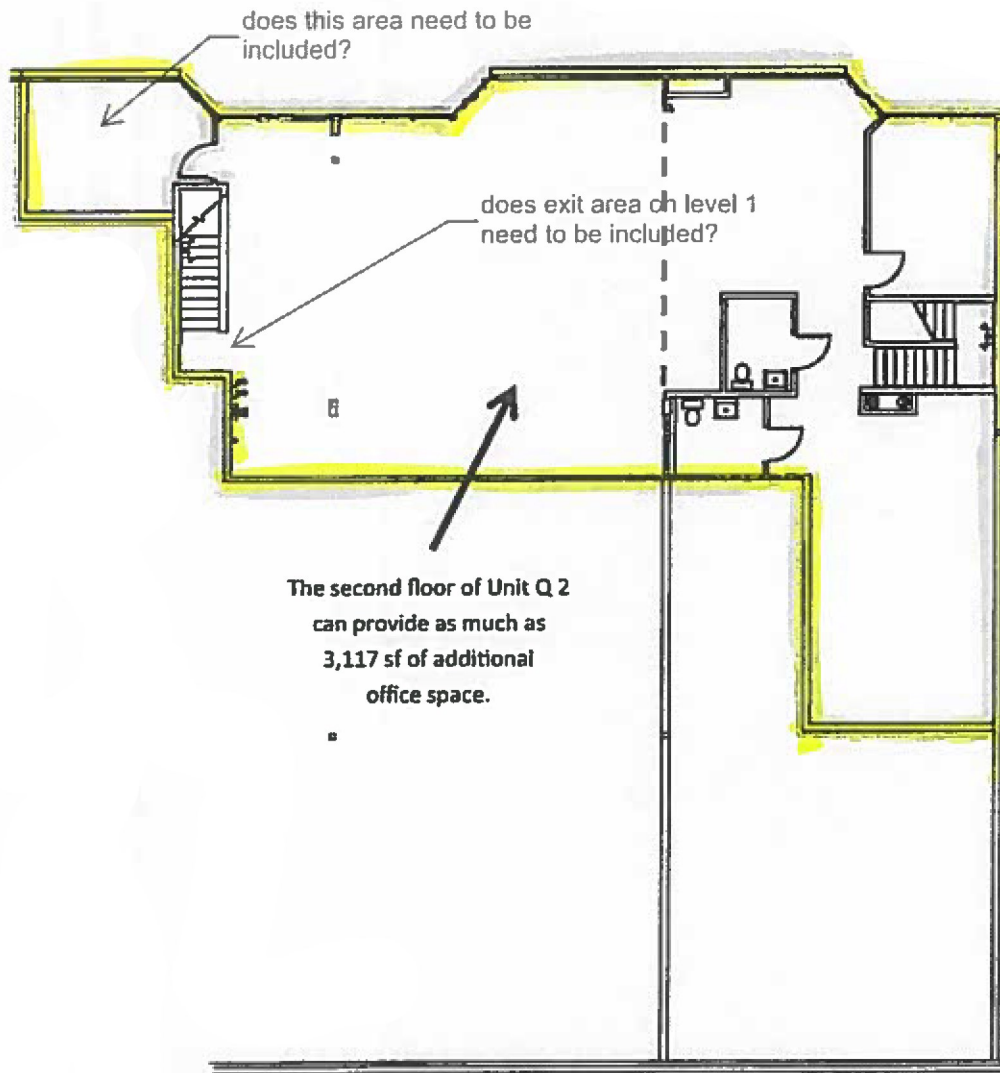


Huffman Business Park Building Q

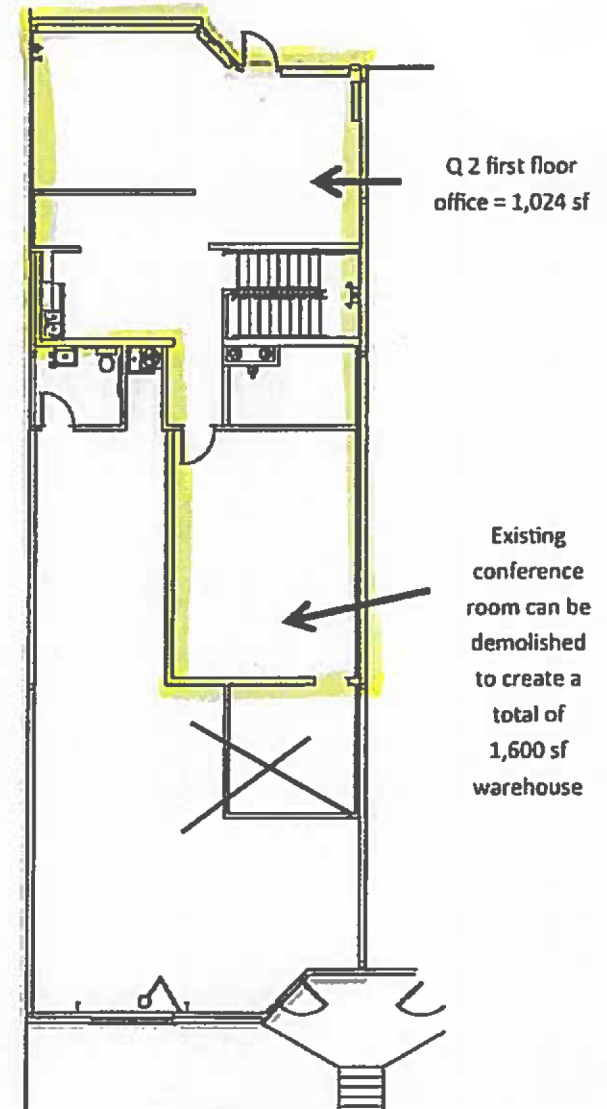
Unit 2



Huffman Business Park Building Q
Unit 2



Unit Q 2 second floor
Office = 3,117 sf



Unit Q 2 first floor
Warehouse & office = 2,624 sf