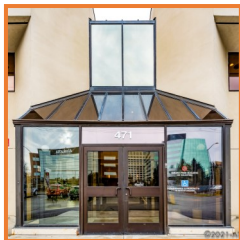




471 W. 36th Avenue, Anchorage, AK
Suite 202 - 2,390 square feet
Office Space



- Free on-site parking
- Full service amenities
- Convenient midtown location
- ADA accessible with elevator to 2nd floor
- \$1.95/sf, fully serviced

Midtown Plaza

Contact

Cycelia A. Gumennik

907-564-2496

Cycelia@DenaliCommercial.com

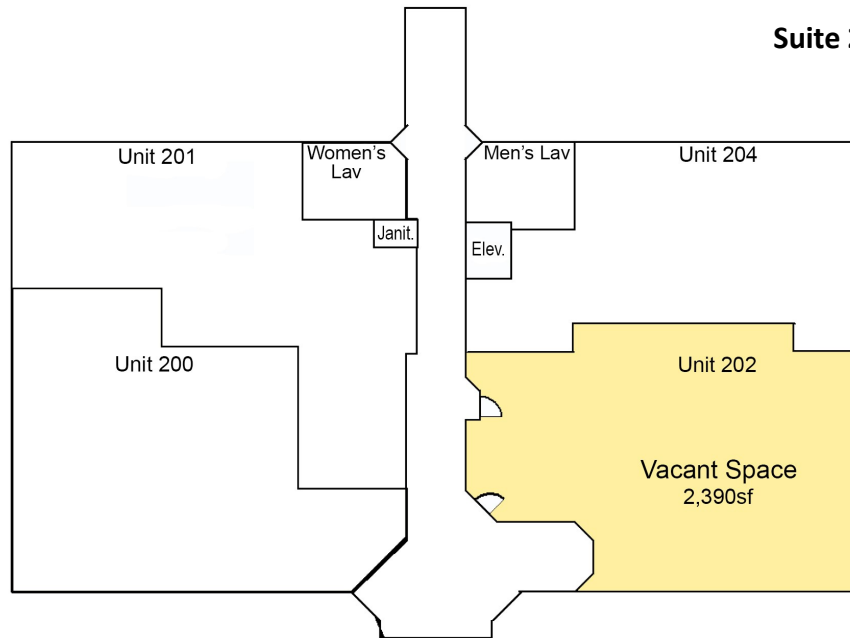
DenaliCommercial.com

NO WARRANTY OR REPRESENTATION, EXPRESS OR IMPLIED, IS MADE AS TO THE ACCURACY OF THE INFORMATION CONTAINED HEREIN, AND THE SAME IS SUBMITTED SUBJECT TO ERRORS, OMISSIONS, CHANGE OF PRICE, RENTAL OR OTHER CONDITIONS, PRIOR SALE, LEASE OR FINANCING, OR WITHDRAWAL WITHOUT NOTICE, AND OF ANY SPECIAL LISTING CONDITIONS IMPOSED BY OUR PRINCIPALS NO WARRANTIES OR REPRESENTATIONS ARE MADE AS TO THE CONDITION OF THE PROPERTY OR ANY HAZARDS CONTAINED THEREIN ARE ANY TO BE IMPLIED.



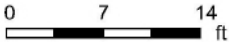
Midtown Plaza

Suite 202



471 W 36th Ave, Anchorage, AK

2nd Floor, Suite 202



PREPARED: 2021/10/20

